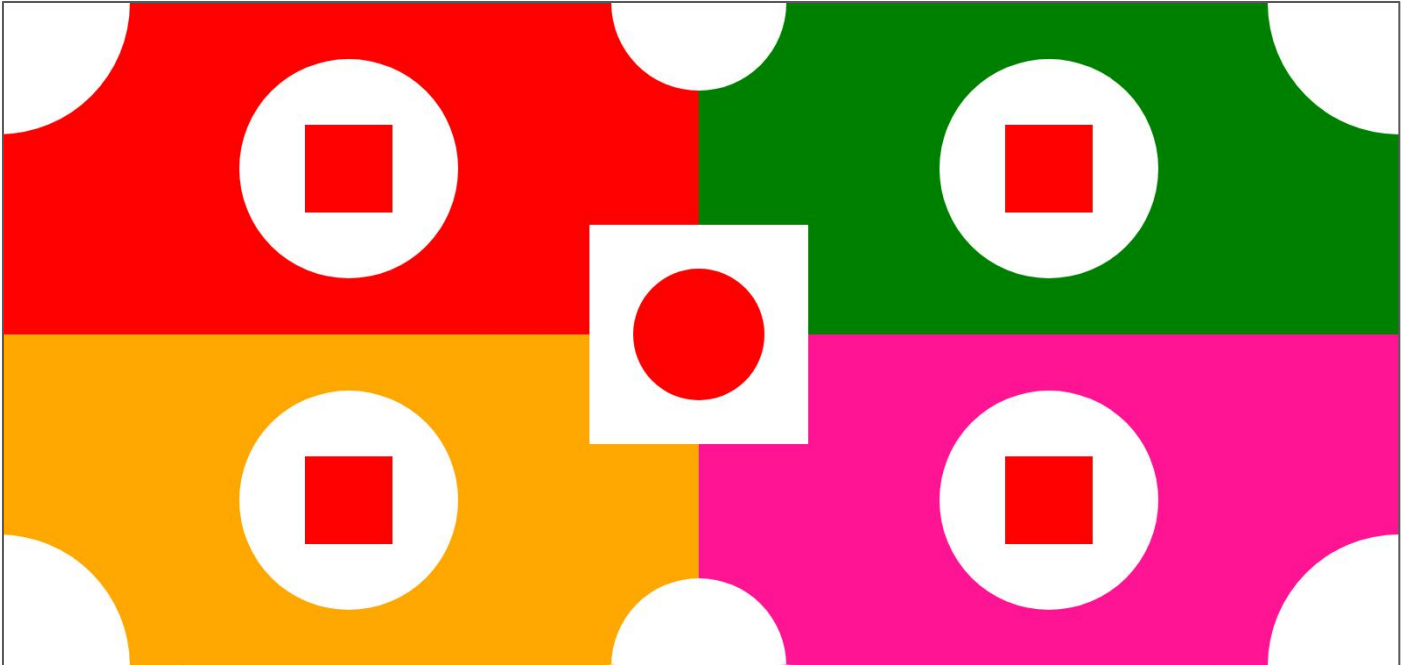


Using the CSS positions you learned, try to implement the following designs.

**Case 1:-**



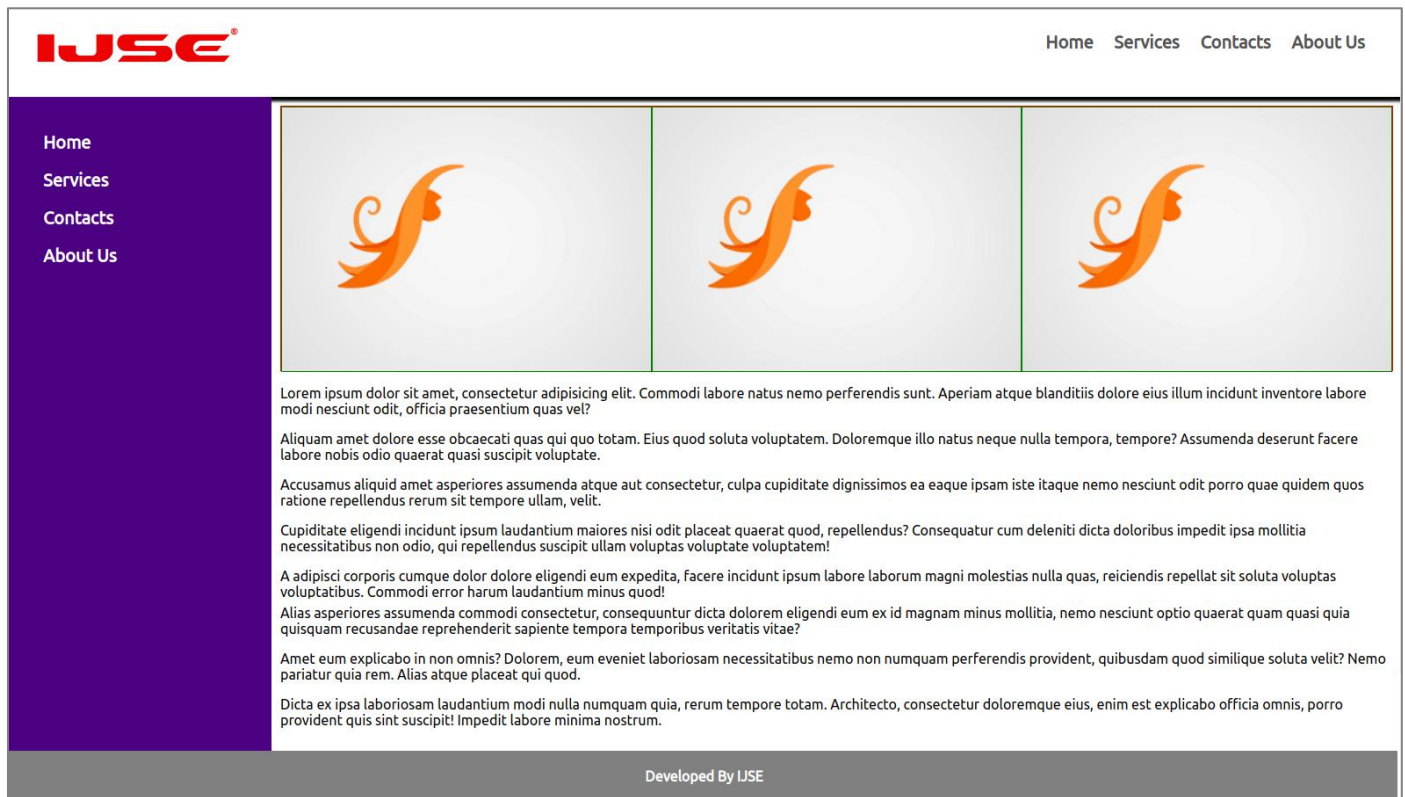
Create this design concerning about the following note and refer the video for more information.

**Note :-**

01. Use the whole screen for the designing.
02. Use only Absolute and Relative Positions.
03. Apply suitable measurement units.
04. The design cannot be changed when the browser resize.
05. No any images are allowed.

[Case One Example Video](#)

## Case 2:-



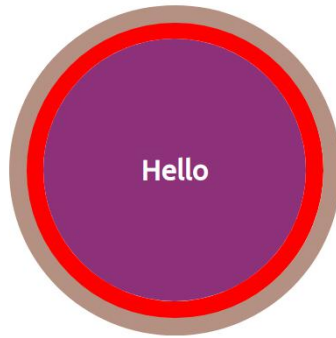
Create this design concerning about the following note and refer the video for more information.

### Note :-

01. Use **relevant HTML** elements to structure the above design.
02. Use only **Absolute, Relative** and **Box-Model** to style
03. The side navigation bar height should be automatically re-sized according to the content height.
04. The design structure cannot be change when new contents are adding to the content area (under the paragraphs).
05. Use Google fonts and FontAwsome to add extra styles.

### Case Two Example Video

### Case 3 :-



### Note :-

Use fixed position to design the above case. Refer the video to get a clear idea.

01. Use only Absolute, Relative and Fixed positions

02. Use the whole screen.

03. The two main borders (gray and red) must be freeze on the center of the viewport and other content should flow down inside the border.

[Example Video for Case 3](#)

#### Case 4 :-

Card 1

# Hello

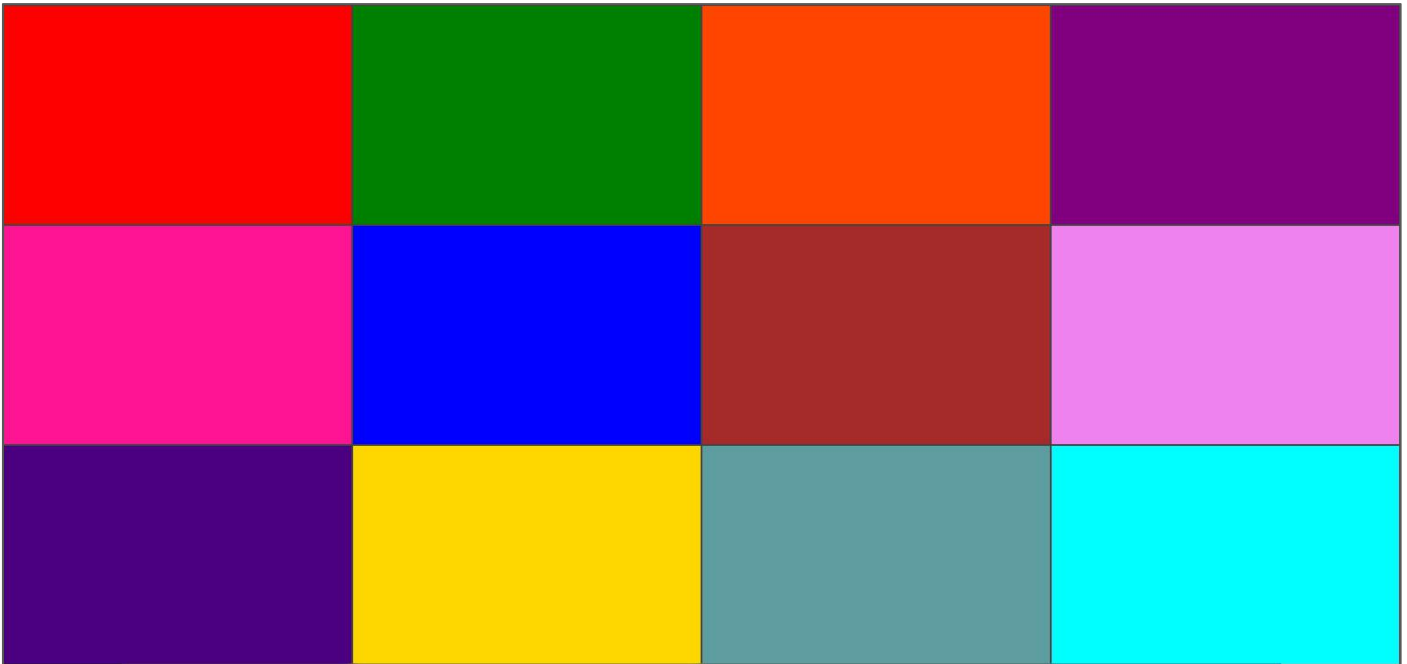
#### Note :-

Use Sticky position to design above design.

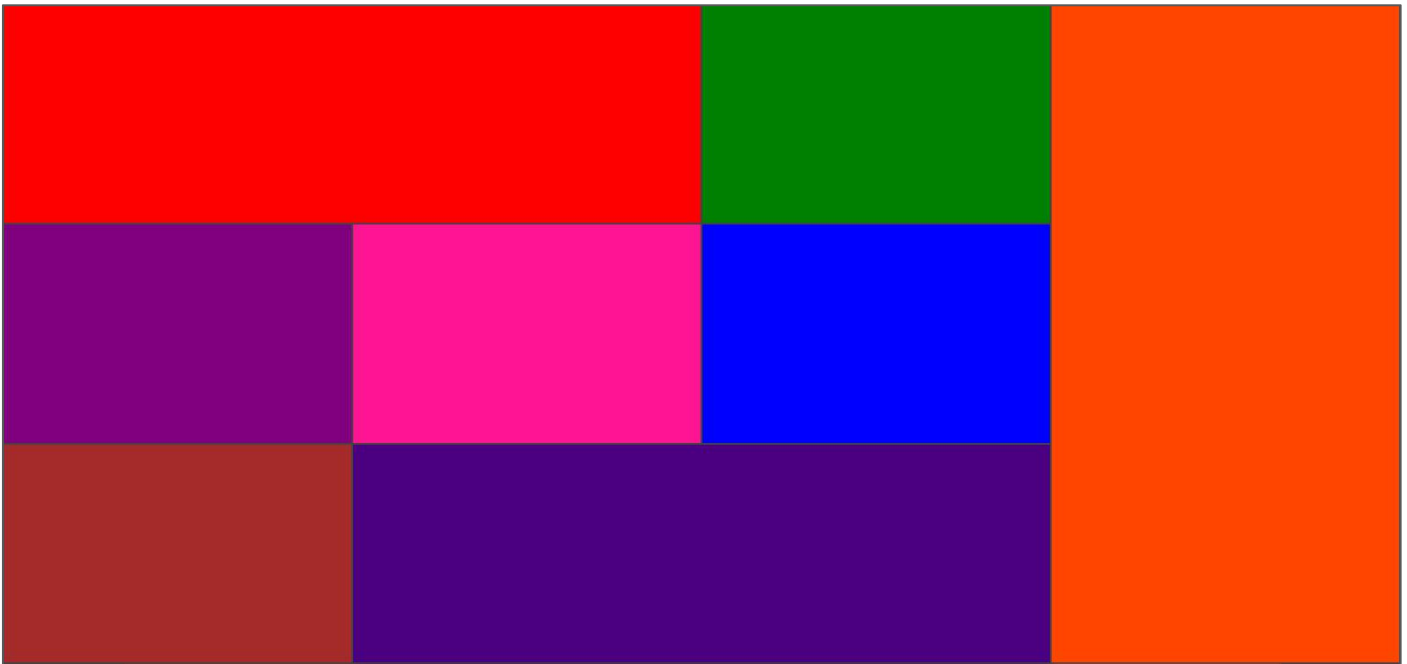
01. Use only Absolute, Relative and Sticky positions as you prefer.
02. Use the whole screen for the design.
03. Refer the following example video for more informations.

[Example Video for Case 4](#)

**Case 5 :-**



**Case 6 :-**



**Note :-**

Use Grid Layout to implement case 5 and case 6.